

1st eco friendly

PAPER REUSING SYSTEM

PRINT



ERASE



REUSE

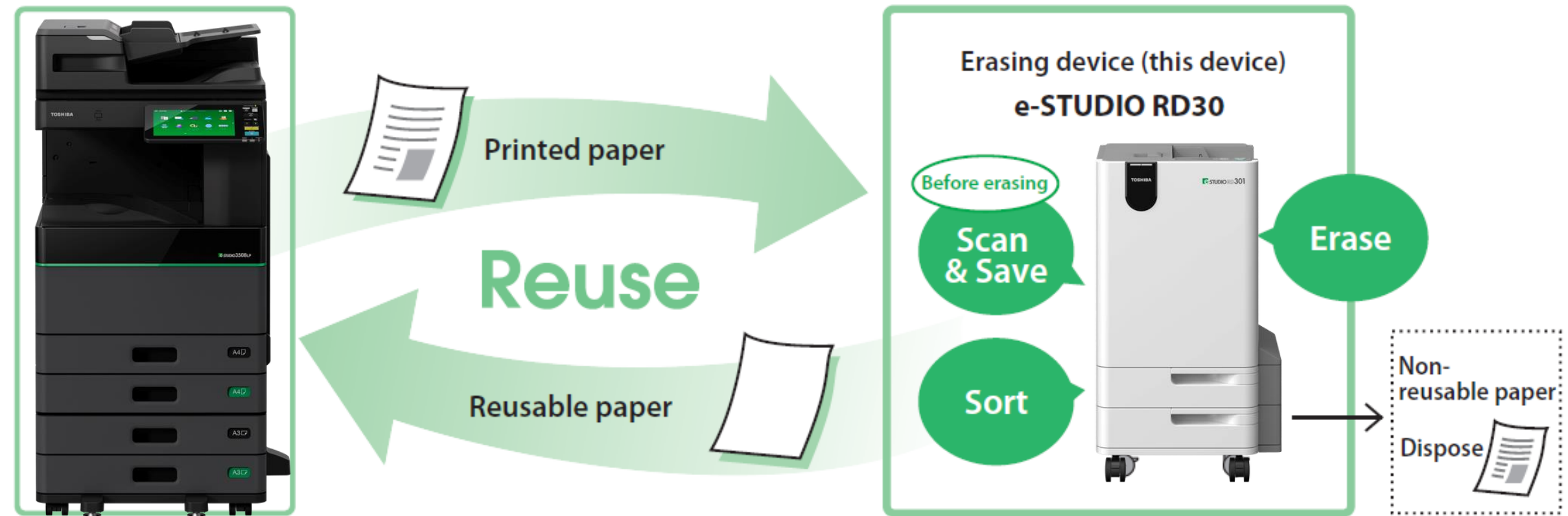


- Print your document
- Save your data
- Erase & reuse paper
- Reduce CO2 by 55%
- Save up to 80% on paper cost



PROTECTING THE ENVIRONMENT WITH ECO PRINTING

TOSHIBA e-STUDIO4508LP and the e-STUDIO RD301 is a revolutionary design to incorporate a unique erasable toner enabling the printed output to be erased and the paper re-used multiple times. By reducing paper consumption, you help to reduce solid waste, air & water pollutants, thereby keeping our society sustainable.



Toshiba TEC

ECOLOGICAL POLICY

To contribute to a more sustainable society, Toshiba Tec Group promotes its environmental plans giving the highest priority to conserving and protecting environmental resources in the case of each business processes and products.

Manufacturing

To reduce the burden on the environment at the design development stage, we promote green procurement of environmentally friendly materials and parts, and act to conserve energy and reduce the use of certain hazardous substances.

Use

We contribute to easing environmental burden through our economical and efficient products, when customers use them.

Disposal

We proactively collect and recycle used products and parts to reduce the volume of materials that must be disposed of and make better use of existing resources.

Reduced environmental burden through environmentally friendly products

Better use of paper

Paper which is made from limited resources of water and wood has to be used more economically to reduce the CO2 emitted during paper production, thereby improving sustainability and helping slow down global warming.

Reduced power consumption

Functions like low-temperature fusing toner, sleep mode and others reduce power consumption both when the devices are in use and during standby.

Reduced packaging and raw material consumption

Smaller and lighter products reduce the consumption of raw materials and also reduce the amount of packaging needed, making distribution more energy-efficient.

PAPER REUSING SYSTEM

To contribute to a more sustainable society, Toshiba's Paper Reusing System prints the document in an erasable blue toner, and the e-STUDIO RD30 erases the documents for reuse. This system helps you to ease the environmental impact. Instead of restricting your ways to use paper, this system reduces paper consumption by using it effectively.

Ecology

Using a single sheet of paper 5 times, rather than just once reduces CO2 emission roughly 50%

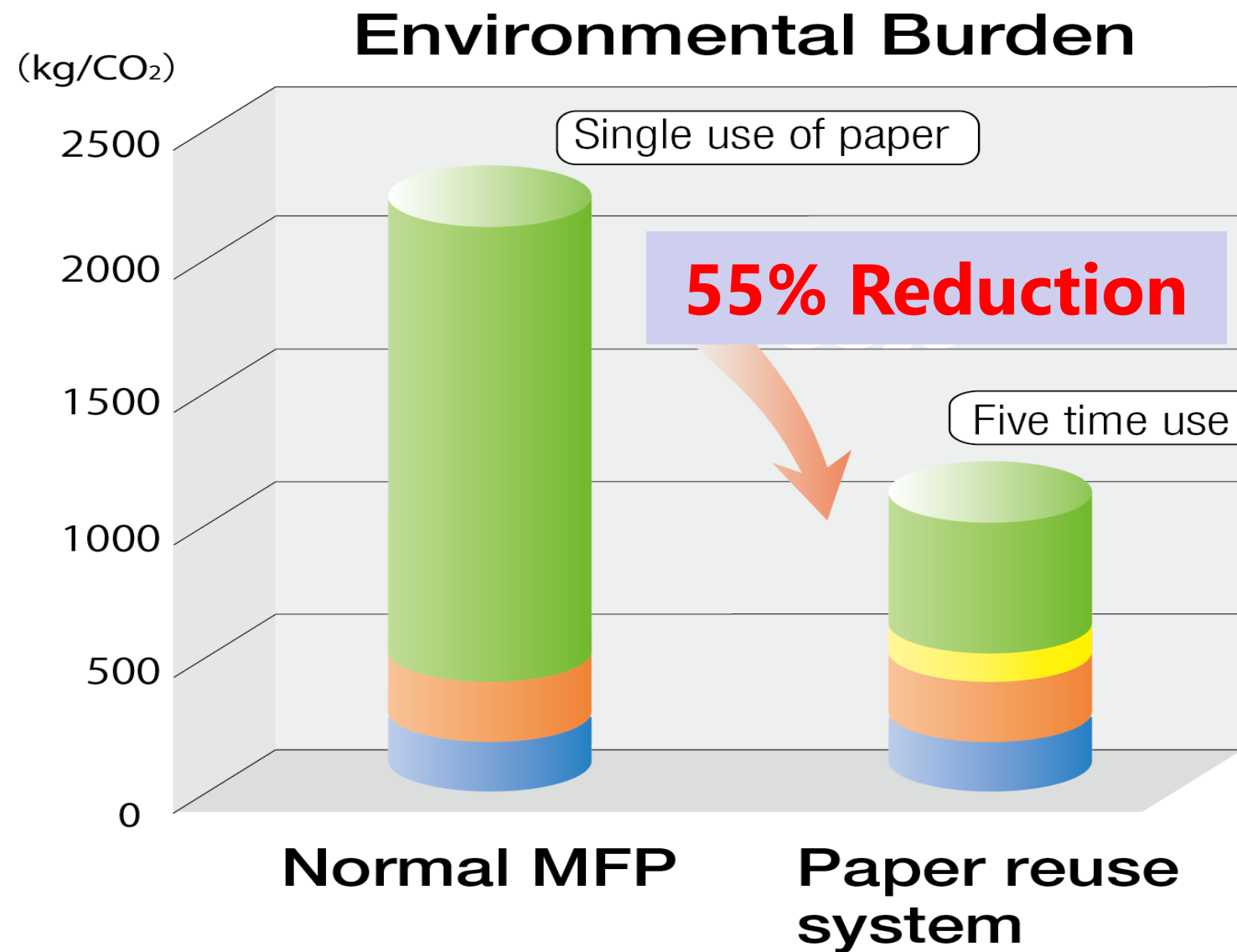
Efficiency

Since printed documents are digitized before being erased, and the paper processed for reuse, paper does not pile up, increasing efficiency

Economy

Paper expenditures cut by up to 80% when you use the same paper 5 times. Reduced paper consumption means less time spent reordering, less money spent on disposal, and less space needed for storage

CO₂ Reduction Effect by Reusing Paper

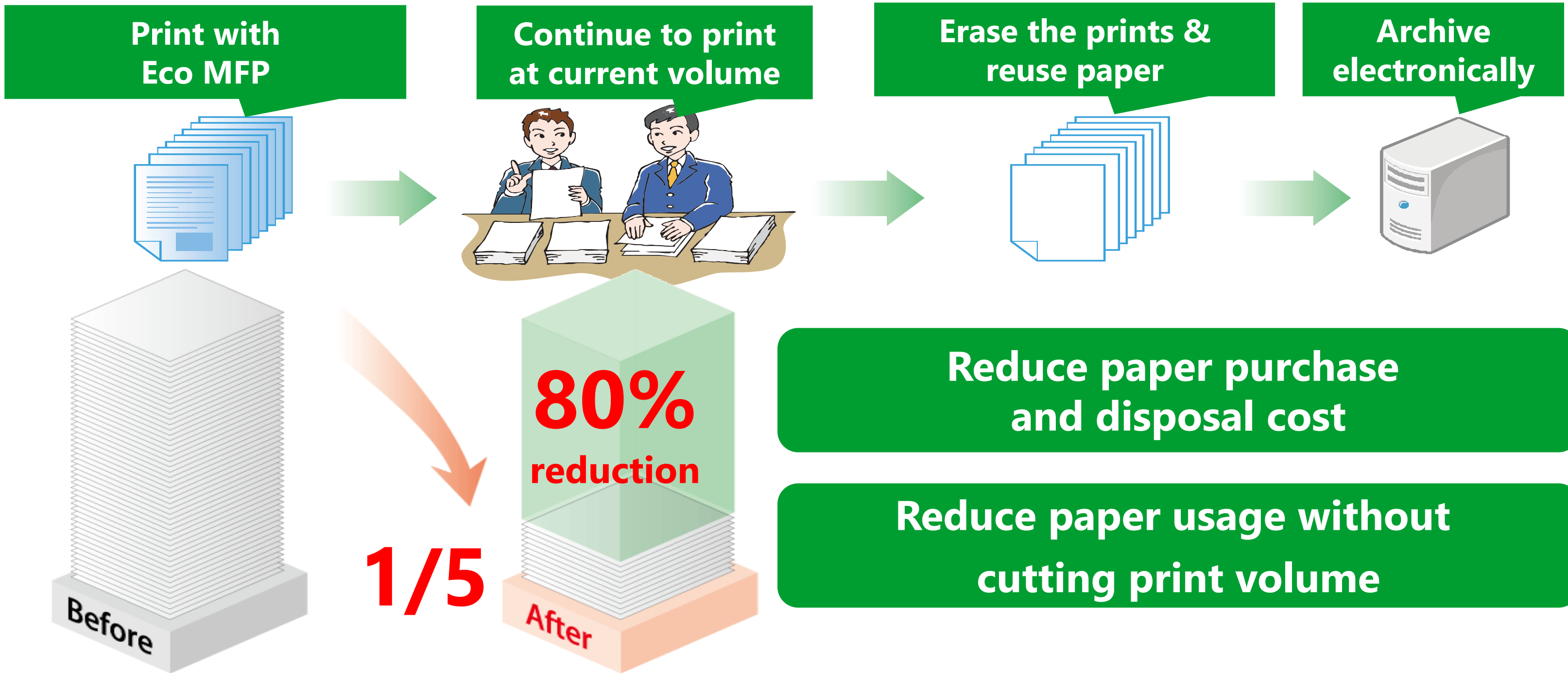


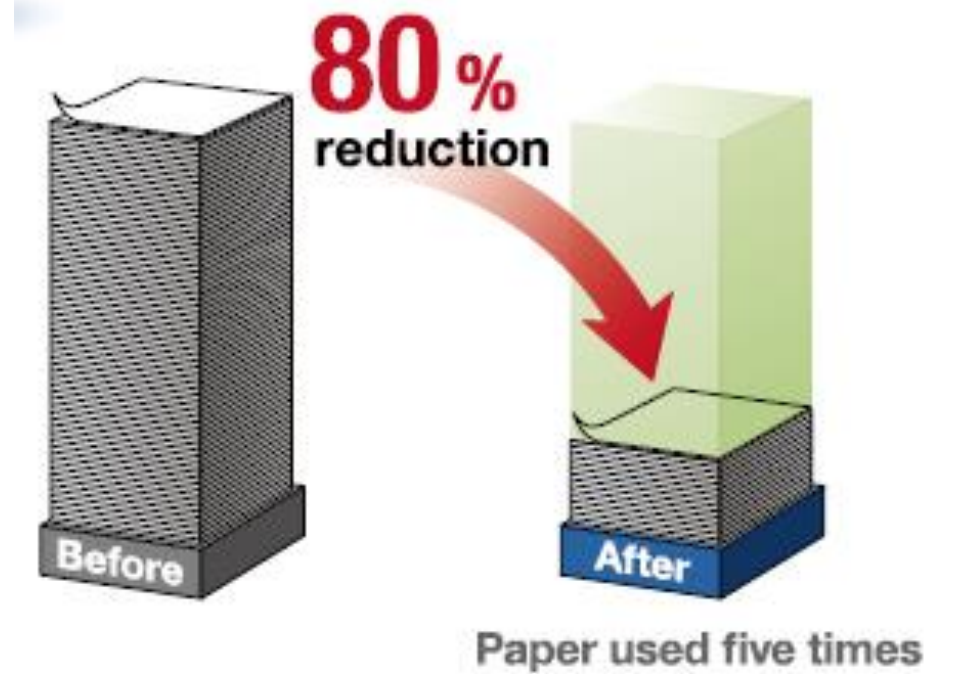
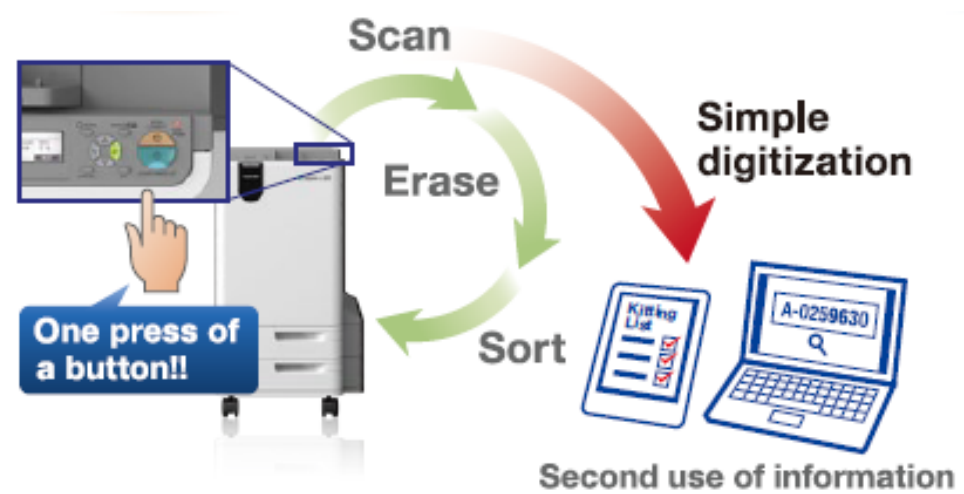
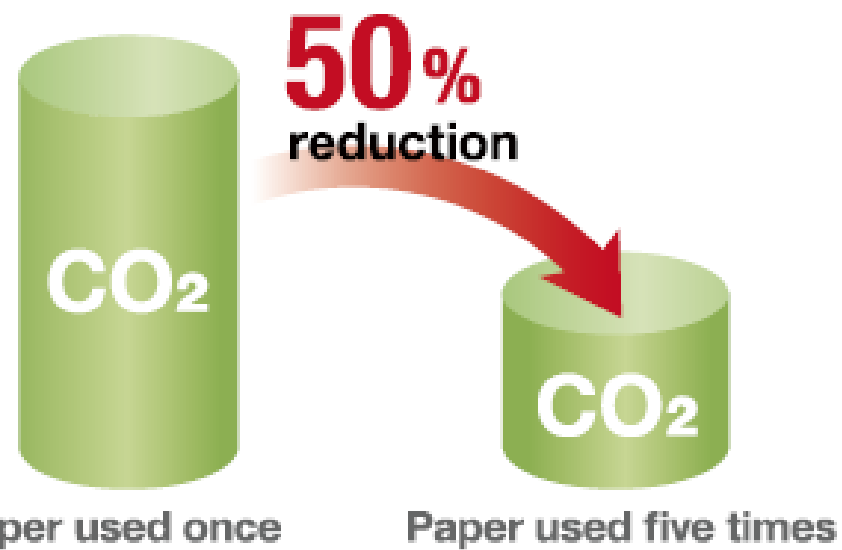
- Energy for paper production
- Energy for erasing
- Energy for machine use
- Material, production, transportation, disposal, and recycle

When paper is used 5 times, you can reduce CO₂ by 55%*

- Print Volume 5,000 per month
- Use 5 time, erasing 4 times
- Paper = 1.52kgCO₂/kg
- Electricity = 0.35 kgCO₂/kWh
- Added MFP & Erasing Device LCA

Paper & cost reduction





Paper is indispensable for society and economic activity.

Simply using less paper is desirable, but using it more effectively is even better.

TOSHIBA's Paper Reusing System will help you create a completely new and efficient work style that's better for the planet. And, most importantly, better for your bottom line too.

THANK YOU



- Print your document
- Save your data
- Erase & reuse paper
- Reduce CO2 by 55%
- Save up to 80% on paper cost

